



Durability and Partnerships

Tuesday, December 3rd, 2:00 – 3:15 PM ET

Technical Tips

1. To comment and access resources go to the **"Chat"**.
2. Add questions to the **"Chat"**.
3. **Adjust your audio** to your own personal settings.

Portions of this townhall are **being recorded** and will be posted on <https://www.communityschools.org/link/join-a-network/research-practice-network/>

Land Recognition



<https://usdac.us/nativeland> #HonorNativeLand Guide

IEL CCS RPN Research Agenda



IEL CCS RPN Co-Chairs



Dr. Naorah Rimkunas

CCS RPN Researcher Co-Chair;
Assistant Professor of Community
Schools at Binghamton University



Xavier Cason

Director of Community
Schools & School
Transformation, Durham
Public Schools



Durability

the ability to exist for a long time without significant deterioration in quality or value

Sustainability

Financial strategies for long-term stability and viability of a strategy, initiative, intervention, and/or program



Blended Funding

combined multiple funding source into one joint stream with a shared purpose

Braided Funding

pooling multiple funding streams with a shared purpose while separately tracking and reporting on individual funding streams

Today's Speakers



WAYNE COUNTY
Community Schools

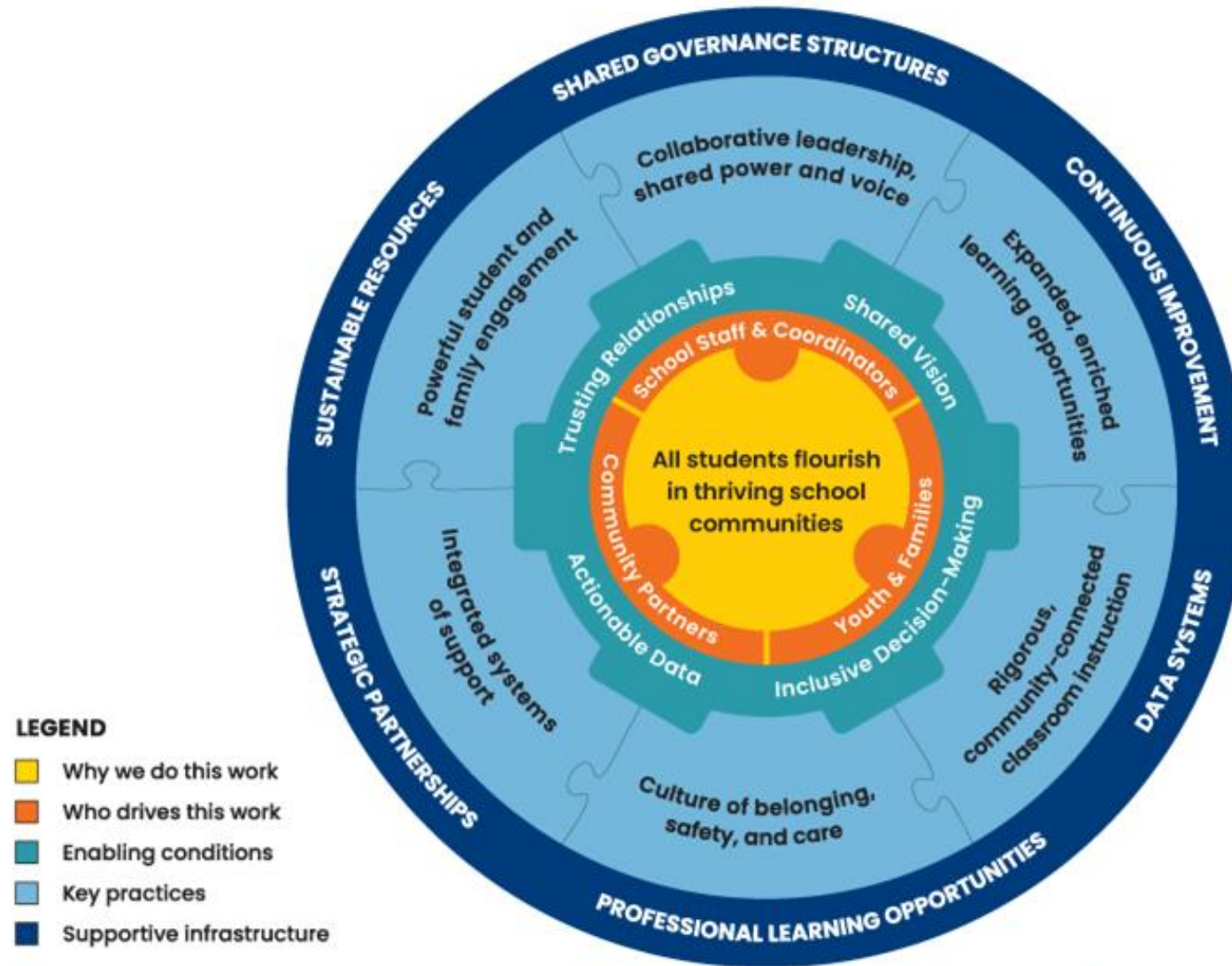
Dr. Manual Pastor

“Let’s move from celebratory stories of beating the odds to celebrating our movements that change the odds for all of us.”

STATEMENT OF INTENT: 2022-23



Essentials for Community School Transformation



ARCH



ATTACHMENT

Youth and families that feel supported and connected.



COLLABORATION

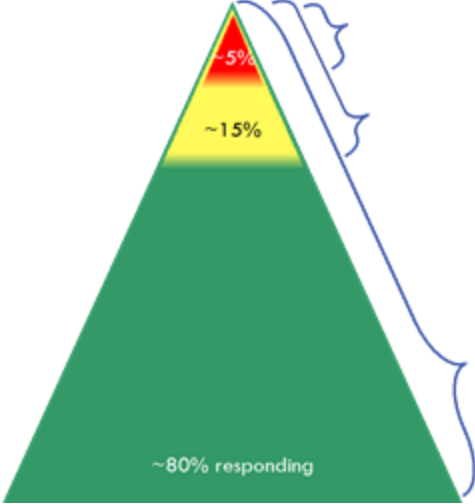


COMPETENCY

Youth and families who have competencies in academics and skills built for careers and personal growth (academic & life skills).

HEALTH

Youth and families with improved health and wellness.



TIER	ATTACHMENT	REGULATION	COMPETENCE	HEALTH
TIER 1	Hallway Greetings Community Circles Inclusive language/curriculum	PBIS Lessons SEL Curriculum Prevention Curriculum	Core Curriculum/Clubs After School Program Differentiated Instruction	Universal Free Lunch Recess Public Health Dept lessons
TIER 2	Peer Mentoring SEL Groups Check In/Check Out Conflict Resolution Circles	SEL Boosters Re-teach for behavior Check In/Check Out	Peer Tutoring College Tutors College Bound Career Exploration Groups	Fitness Groups Weekend Food Program
TIER 3	Mentoring Therapy Harm Repair Circles Crime Victim Advocacy	FBA/BIP Therapy Crime Victim Advocacy	Individual Tutoring Modified Schedules	School Food Pantry
SCHOOL & COMMUNITY RESOURCES				

WCCS Positions by District

School District Logo												
Key Community Schools Lead for Districts	Jay Roscup Rhea Hayes Diane Kellogg	Erin Church	Libo Alexanian	Casey Steiner Shane Dehn	Sandra Ordan Julia Solan	Val Fanning Amanda Roberts	Laurie Elliot	Kimberly Stewart	Jennifer DeVinney	Karen Hoody	Melissa Reeves	Cathy Grasso
Community School Coordinator	Jay Roscup Rhea Hayes Shane White James Lucieer Charles Smith	CSE: Emma Ibbotson CSHS: Spencer Lippert	LES: Jazmine Johnson LHS: Bridget Burnup	MHS: Megan Arnold MES: Emily Lorenzen	NMS: Braxton Guy NHS: Kim Howell	SES: Nina Bishop SIS: Ed Rose SHS: Tammy Theil	Enjoli Lyon Helena Cuykendall	PMP: Bryan Peck PHS: Asfa Sill	RCHS: Justine Quackenbush Enjoli Lyon Helena Cuykendall	WES: Erin Rowley WM/HS: Lisa Ford		
Optimal Health Coordinator	Jill Harper Tina Murty Tina Durham	Tia Lacroix	Amanda Lesterhuis Tina Durham	Leah Grzyboski	Amanda Lesterhuis	Leah Grzyboski	Tia Lacroix	Amanda Lesterhuis	Tia Lacroix	Leah Grzyboski	Leah Grzyboski	
FACE Team	Laura Brown Nate Hawver June Muto Tyrese Jenkins	CSE: Deontae Tarver CSHS: LeeAnn Payne	Colby Balcom Juan Alfaro	Laura Brown Chana Bearce	Molly StCyr	David Englert Christine Shove Colin Bucenec Kea Handford Nelly Edinger Jai Ortiz -Sodus ES	Colby Balcom Juan Alfaro	Leslie Vecchiotti	Colby Balcom Juan Alfaro	Chana Bearce Laura Brown		
STEADY Work	Jeremy Huges Ravone Burnell Janet Cooper Robyn Moutray	Spencer Lippert LeeAnn Payne	Jeremy Hughes Jim Salerno Jahaan Williams Collin Degraff	Megan Arnold	Josh Arnold Eric Rosales Clive Guy Drew Miller David Weaver	Maybelle Zanders Maliq Gilliam Jose Quintero Tyre Cromartie Marquese Burton Steven Hughes Rob Wahl	Enjoli Lyon	Asfa Sill	Enjoli Lyon	Lisa Ford		



View it larger here



SUPPORTING KIDS' HEALTHY DEVELOPMENT

Wayne County, NY

**Get Ready to GROW
provides free
developmental checks and
follow-up support for
children aged 12-60
months.**

**A full screening would
include these 8
components:**



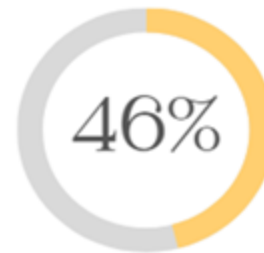
CHILDREN'S SCHOOL BASED MENTAL HEALTH CLINIC TREATMENT PROGRAM

Units of Service: 58,241

- 32 licensed satellite mental health clinics within 11 Wayne County schools including WFL-BOCES
- Mission: Provide mental health services to the youth of Wayne County co-located directly in their school buildings
- Increase access to quality, affordable, and confidential mental health services for youth
- Reduce barriers such as transportation, time, and limits to collaboration

MH School Clinics

26,950



Mental Health Clinic

13,693



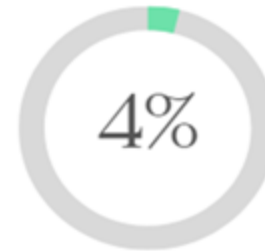
SUD Clinics

13,788



Care Management

2,317



OAC & CIT

1,331



Court Evals

162





NEWARK PILOTS FAMILY NIGHT

SPONSORED BY WAYNE MOST



FREE FOR WAYNE COUNTY STUDENTS
AND THEIR FAMILIES ONLY

SUNDAY, JUNE 9 @ 5PM

COLBURN PARK, 1160 E. UNION ST. NEWARK

HAMBURGER OR HOT DOG
W/ CHIPS & A DRINK INCLUDED



GAMES FOR KIDS
MEET THE PILOTS MASCOT!

REGISTER AT WAYNEMOST.ORG



STEADY Work

PROGRAM GROWTH

2020- 41 Youth

2021- 108 Youth

2022- 189 Youth

2023- 410 Youth

(10x increase in four years)



38+ Funding Streams

\$15 Million

6 Districts

3 Agencies

1 Purpose



Community Matters

“There is no research that says all hope is lost. Hope is only lost when adults in community fail to rally to do their job.”

Dr. Susan Craig

Chicago Public Schools

Sustainable Community Schools



Sustainable Community Schools Overview

The [Sustainable Community Schools](#) (SCS) prioritizes shared leadership where families, students, school staff, and community members are empowered and equipped to be decision makers to transform their local school communities and foster collective well-being.

SCS is centered on

- **Prioritizing Historically Disinvested Communities:** Sustainable Community Schools leverages community wisdom, educational justice and distribution of resources to promote equity, ensuring schools become neighborhood anchors.
- **Rooted in Community Strengths and Partnerships:** The Sustainable Community Schools (SCS) partnerships with community organizations, staff, students, and families are integral to enriching the educational experience and embedding these partnerships within the school's operations.
- **Cohort-Based Collaboration:** Sustainable Community Schools (SCS) operates as a cohort model, fostering collaboration both within individual schools and across multiple schools in the model.

SNAPSHOT: THREE SCS MODELS



CSI Grant Funded (21st CCLC and FSCS)

District-managed

104 schools

\$145K per school

CPS selects schools based on Grant Requirements and Community Need



CSI - External (CSIx) (21st CCLC)

External Agency-managed

100 schools

\$129K per school

External Agency selects schools based on ISBE Grant Requirements and School Relationship



Sustainable Community Schools (SCS)

Partnership with CTU

20 schools

\$500K per school

Schools selected on broad range of metrics (i.e, Community Hardship Index, Demographics) and Geographic Diversity



UCF CENTER FOR COMMUNITY SCHOOLS

College of Community Innovation and Education

Working Together. Realizing Potential.

Community Schools: The Power of Partnership

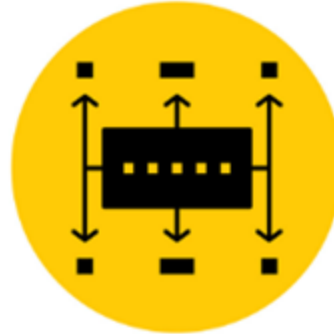
Structures of Community Schools in Florida

College of Community Innovation and Education

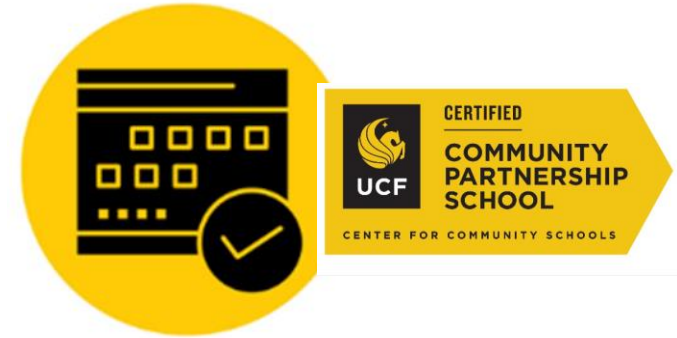
Center for Community Schools (UCF CCS)



Statewide Grantor/Funder
Reporting & Accountability

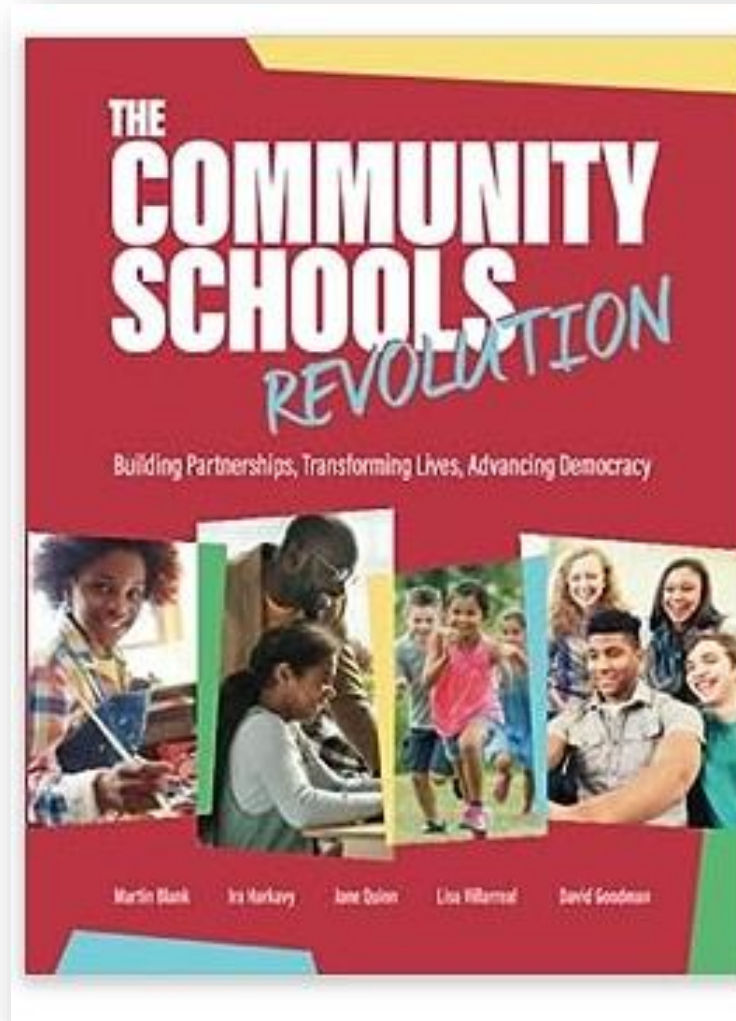


Technical Assistance
Training & Development



Assessment & Evaluation
Certification
Data Management

More about the work



<https://ccie.ucf.edu/communityschools/>
[State Funding Increase To Drive Growth in Community Partnership Schools](#)

Maryland Out of School Time Network (MOST)

One of 50 Statewide Afterschool Networks supported by the Mott Foundation

Maryland Affiliate to the National Afterschool Association

Established in 2007

Currently serves as backbone organization for Maryland Coalition for Community Schools



Education Funding Formula Changes – A Generational Opportunity

1999 – Thornton Commission Established

2002 – Bridge to Excellence Passed

2007 – Inflationary Index Frozen

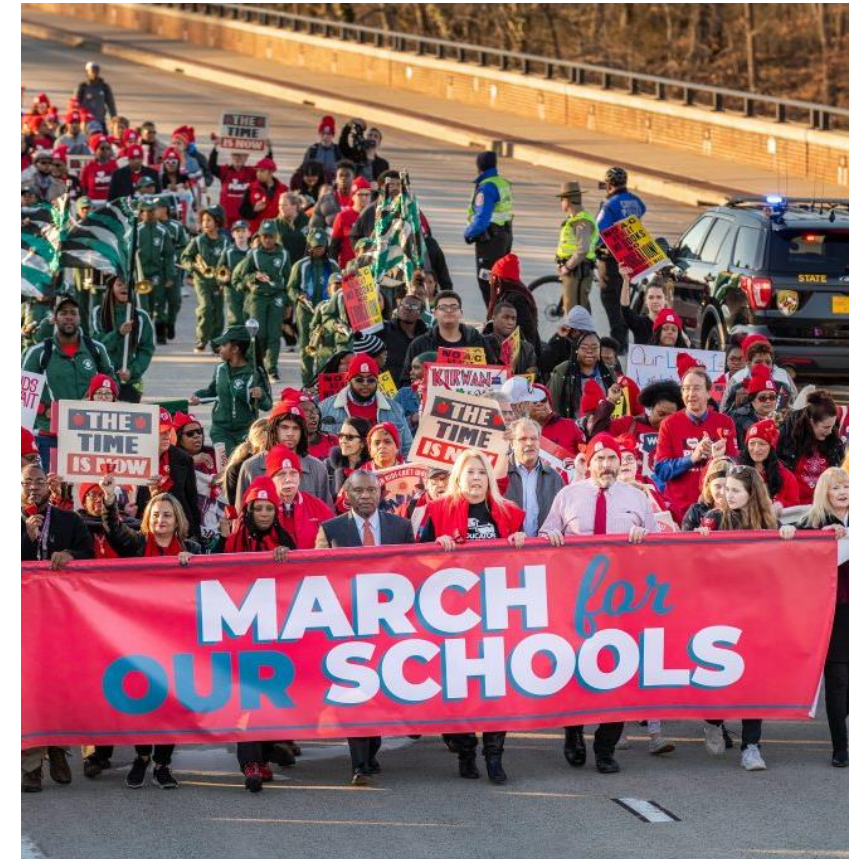
2016 – Kirwan Commission Established

2019 – Final Report Issued and “Bridge” Bill Passed

2020 – Blueprint for Maryland Future is Passed and then Vetoed

2021 – Blueprint Veto Override – HB 1300 Becomes Law

Further Revisions



CS Policy Precursors to Blueprint

Work on ESSA
Plans

Baltimore City
Community School
Policy – 2016,
updated in 2023

Prince George's
Community School
Policy

Community
Schools MSDE
Advisory Letter –
2016 HB 1139

Bridge to Kirwan
Bill – **2019 SB
1030**

Community School
Definition Bill –
2019 SB 661

Concentration of Poverty Grants (CPG)

- ❑ Every school where 55% of students are experiencing poverty (as currently defined by the law) will be a Community School
- ❑ More than 600 schools in 2024-25
- ❑ Personnel Grants - \$257,100 (adjusts with inflation)
Full-time Community School Coordinator
Health Practitioner
- ❑ Per Pupil - Sliding Scale from \$135 (56%) - \$3374 (80+%) at full phase-in

(Page 33 of the Legislation)



Change in Proficiency by School Poverty

Schools with the highest concentration of poverty had the largest average increase in ELA proficiency from 2022 to 2024 while low poverty schools had the largest average increase in math.

MCAP Proficiency by School Poverty Level

School Poverty Level* (school count)	ELA				Math			
	2022	2023	2024	Change (in percentage points)	2022	2023	2024	Change (in percentage points)
Low (643)	60.3%	62.5%	63.1%	+2.8	34.3%	37.5%	39.0%	+4.7
Modest (477)	37.3%	39.1%	39.2%	+2.0	16.4%	18.7%	19.3%	+2.9
Concentrated Poverty (190)	25.0%	27.5%	27.9%	+2.9	9.1%	11.3%	12.0%	+2.9
Highly Concentrated Poverty (80)	13.0%	16.6%	19.4%	+6.4	4.2%	6.1%	7.3%	+3.1

2022-2023 and 2023-2024 MCAP data. *School poverty level based on the percentage of students in poverty. Low poverty: 0-10%, Modest poverty: 11-20%, Concentrated poverty: 21-30%, Highly concentrated poverty: 31% or more.

Stay in Touch

emitchell@mostnetwork.org

<https://www.mostnetwork.org/initiatives/md4cs/>



Gracious Space

Affirming others

Accepting of different perspectives

Being present

Being aware on the impact of others

Assume others' best intentions

Being intentional

Willing to change mind

Reflecting on assumptions

Being curious

Asking open ended questions

Being collaborative

Being authentic

Bridging boundaries

Holding off on judgment

Sharing power



Washington Policy Seminar

[REGISTER AT IEL.ORG/WPS](https://iel.org/wps)





[Register today!](#)

**To view previous webinar recordings, access
our research agenda, and the Community
Schools Research Clearinghouse,
visit <https://www.communityschools.org/link/join-a-network/research-practice-network/>**



Thank You!

Please fill out the post-Town Hall feedback form!