

A decorative graphic consisting of several thick, curved lines in red, orange, yellow, teal, and purple, arranged in a circular pattern around the main title.

Ready, Set, Apply!

FSCS Webinar Series

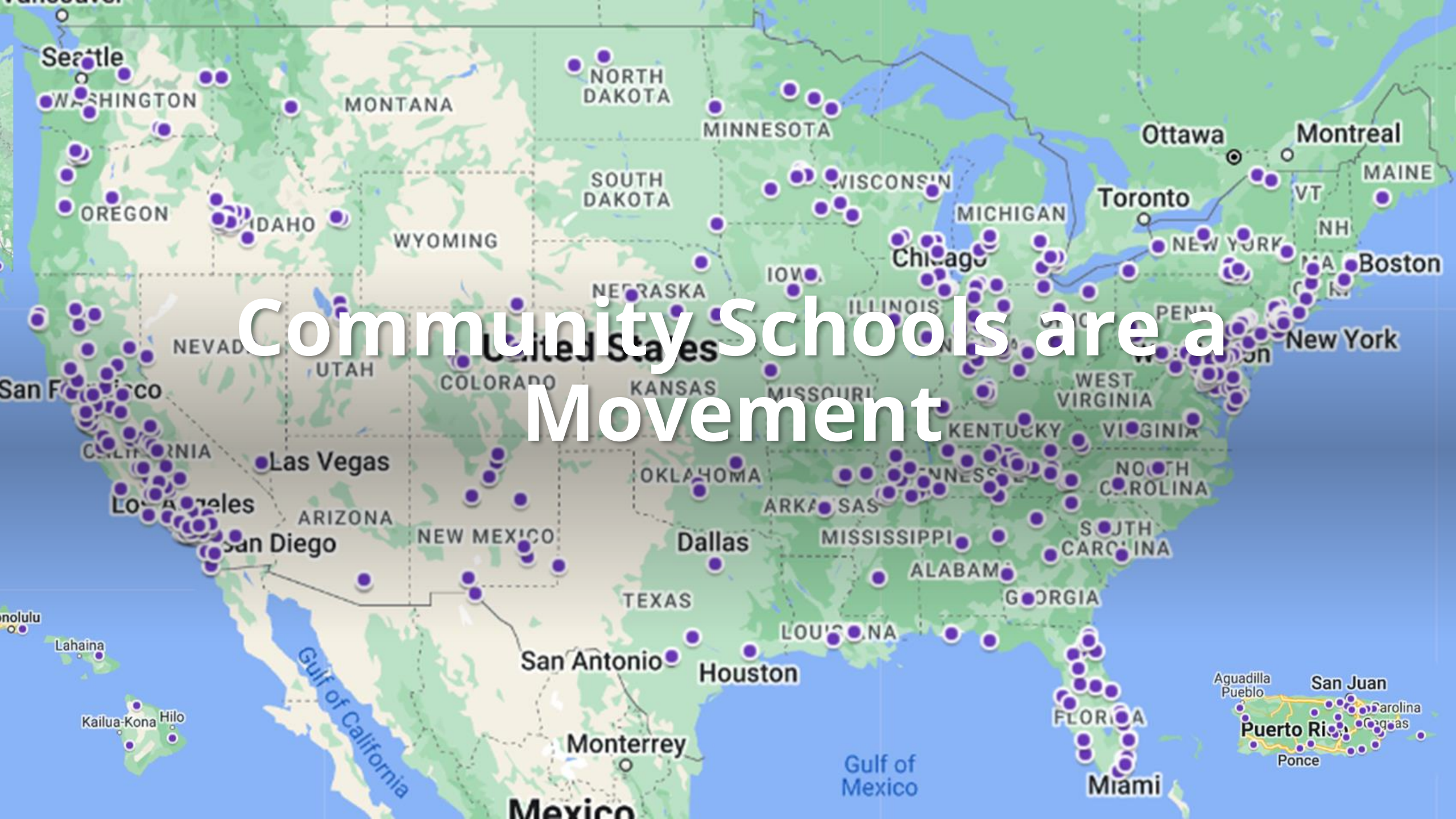
Topic: Project Design and Partnerships
June 27, 2023

Coalition Vision

**Communities where everyone
belongs, works together and
thrives.**

We see Community Schools as the vehicle for
creating these communities.

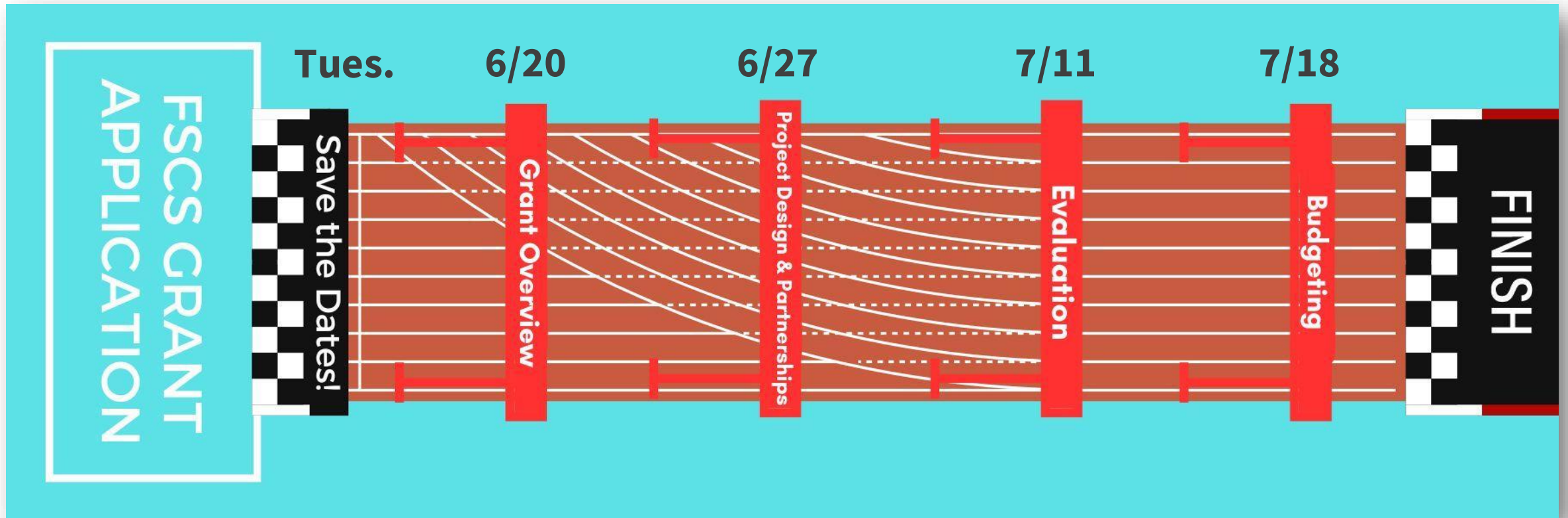
Community Schools are a Movement



Webinars

Tuesdays
2pm (est)

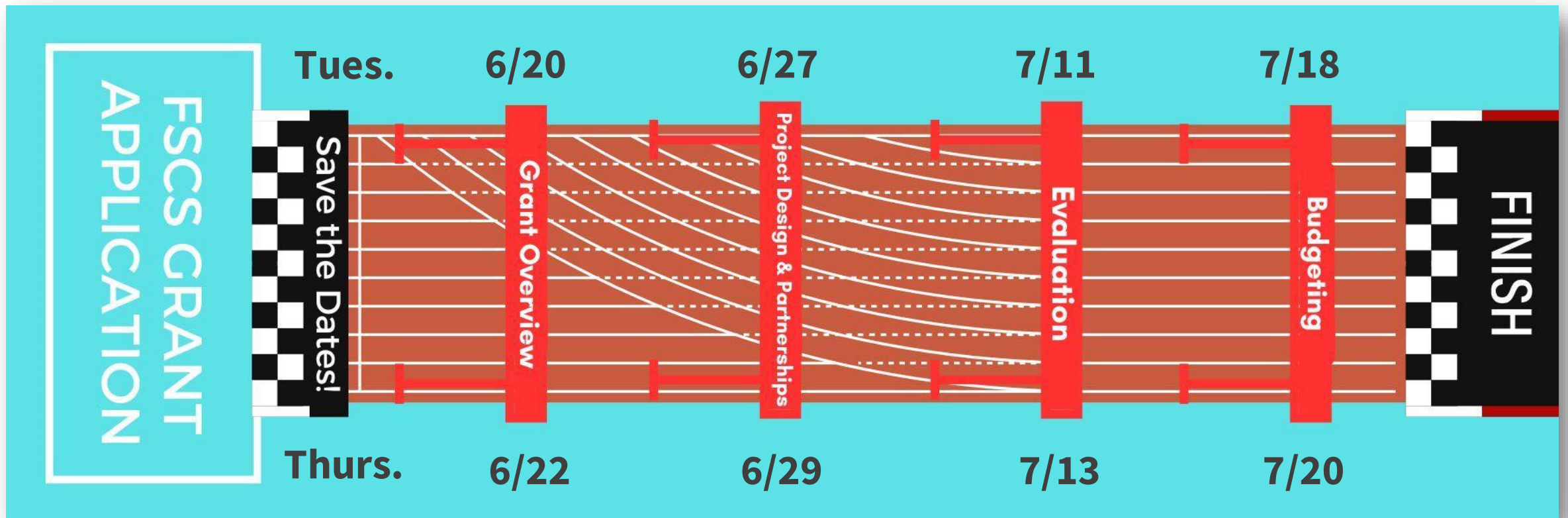
- **June 20:** Grant Overview
- **June 27:** Project Design and Partnerships
- **July 11:** Evaluation
- **July 18:** Budgeting



Hurdle Discussions

Thursdays
2pm (est)

- **June 22:** General Overview
- **June 29:** Project Design and Partnerships
- **July 13:** Evaluation
- **July 20:** Budgeting



Today's Goals



Discuss the power of collaboration

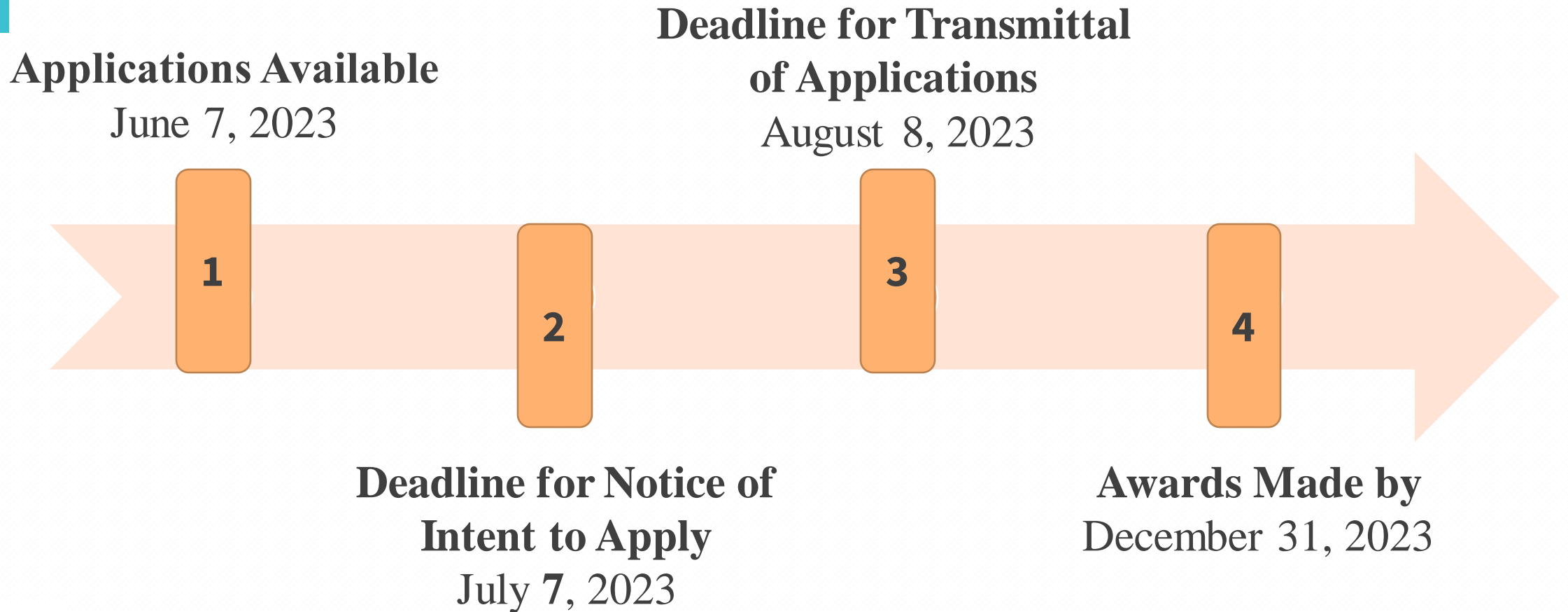


Provide an overview of requirements for project design



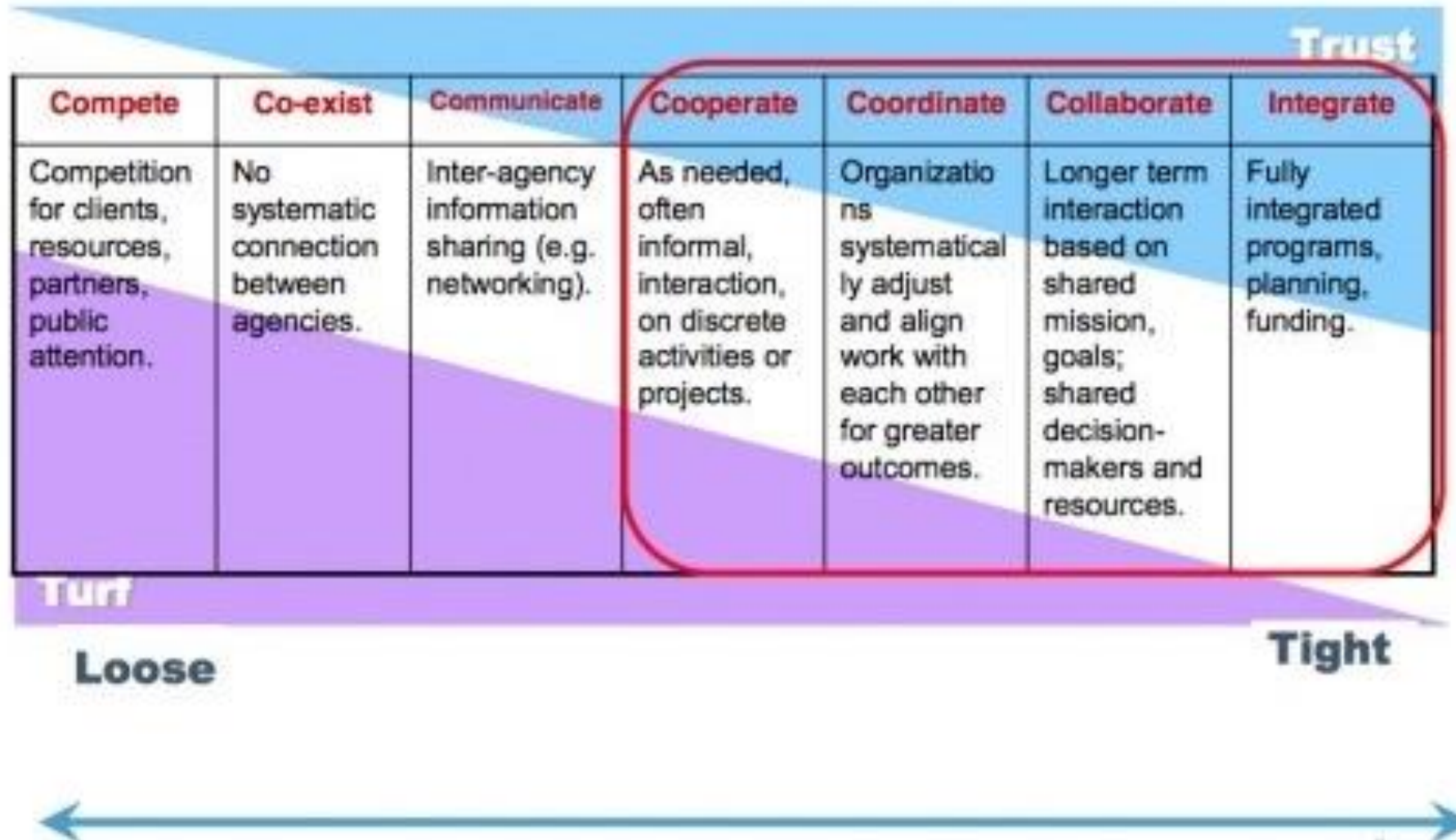
Engage current FSCS grant recipients about lessons learned

FSCS: Notice Released!



Absolute Priority Combinations		
1	Absolute Priority 1: Title 1A Schoolwide Program Eligibility	Absolute Priority 3: Capacity Building and Development
2	Absolute Priority 1: Title 1A Schoolwide Program Eligibility	Absolute Priority 4: Multi-Local Education Agency
3	Absolute Priority 1: Title 1A Schoolwide Program Eligibility	Absolute Priority 5: FSCS State Scaling
4	Absolute Priority 2: Title 1A Schoolwide Program Eligibility and Rural Districts – Small and Rural or Rural and Low-Income	Absolute Priority 3: Capacity Building and Development
5	Absolute Priority 2: Title 1A Schoolwide Program Eligibility and Rural Districts – Small and Rural or Rural and Low-Income	Absolute Priority 4: Multi-Local Education Agency
6	Absolute Priority 2: Title 1A Schoolwide Program Eligibility and Rural Districts – Small and Rural or Rural and Low-Income	Absolute Priority 5: FSCS State Scaling

The Collaboration Spectrum



Quality of Project Design

The Secretary considers the quality of the design of the proposed project. In determining the quality of the design of the proposed project, the Secretary considers the following factors:

- (A) The extent to which the design of the proposed project **reflects relevant and evidence-based findings** from existing literature and includes a **high-quality plan** for project implementation **integrating the four pillars** of full-service community schools and the use of **appropriate evaluation methods** to ensure successful achievement of project objectives. (2022 FSCS NFP) (15 points)
- (B) The extent to which proposed project **demonstrates a rationale** (as defined in this notice). (34 CFR 75.210) (10 points)

Integrating Four Pillars

Pillars and Pipeline Services Together

Integrated Student Supports

- Social, health, nutrition, and mental health services and supports (i.e., stakeholder services)
- Juvenile crime prevention and rehabilitation programs (i.e., restorative practices)

Expanded and Enriched Learning Time and Opportunities

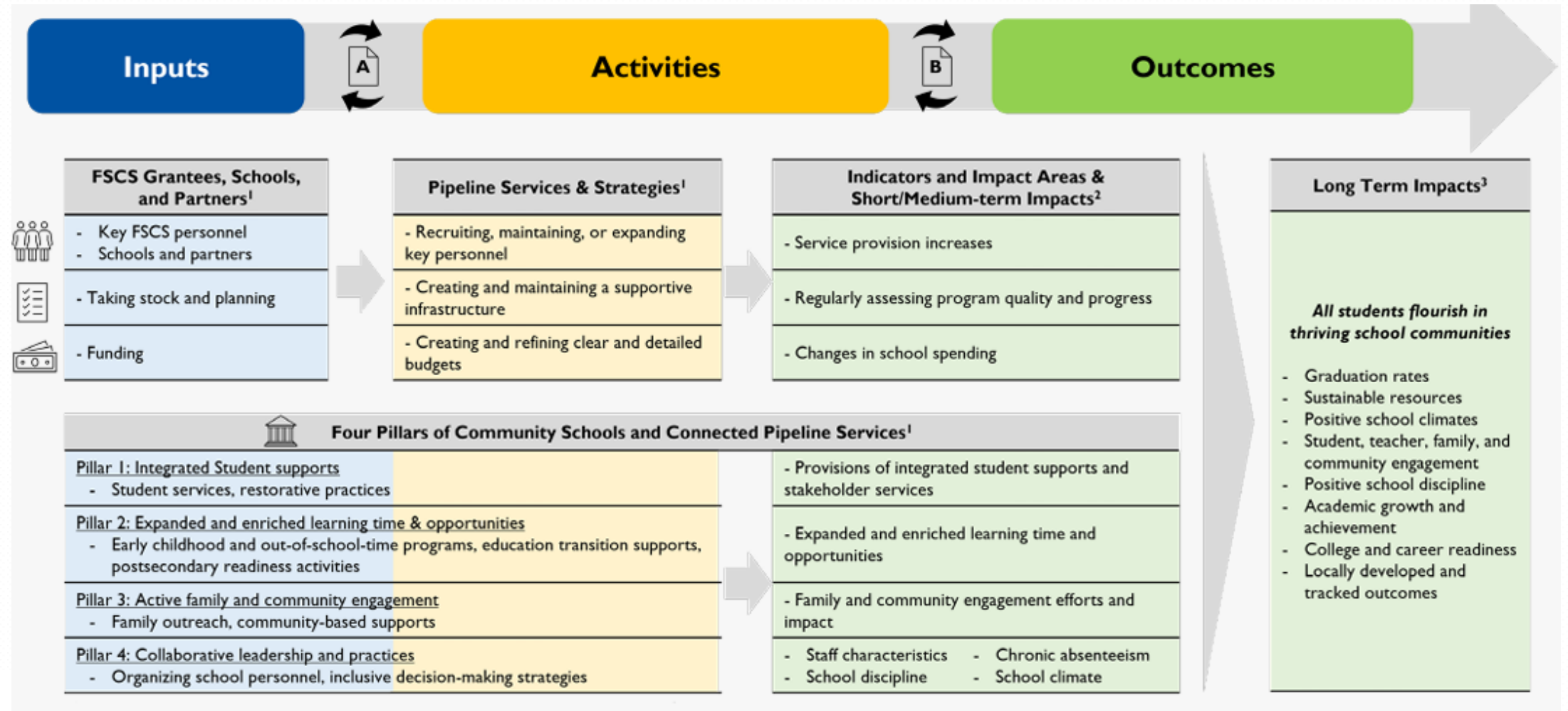
- Early childhood education programs
- Out-of-school-time programs
- Support for a child's education transitions (e.g., elementary to middle, middle to high school)
- Activities that support postsecondary and workforce readiness

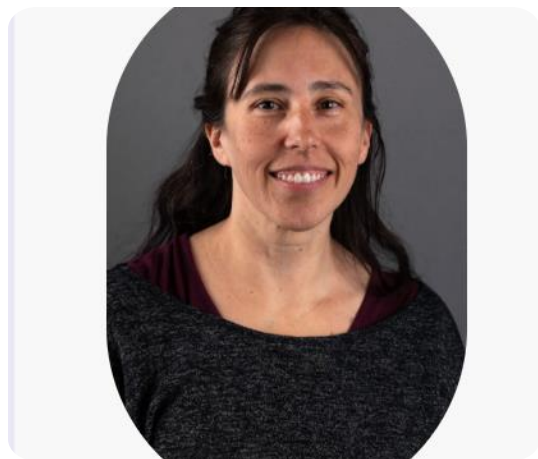
Active Family and Community Engagement

- Family and community engagement
- Community-based support for students

Collaborative Leadership and Practices

Logic Model





Panelists

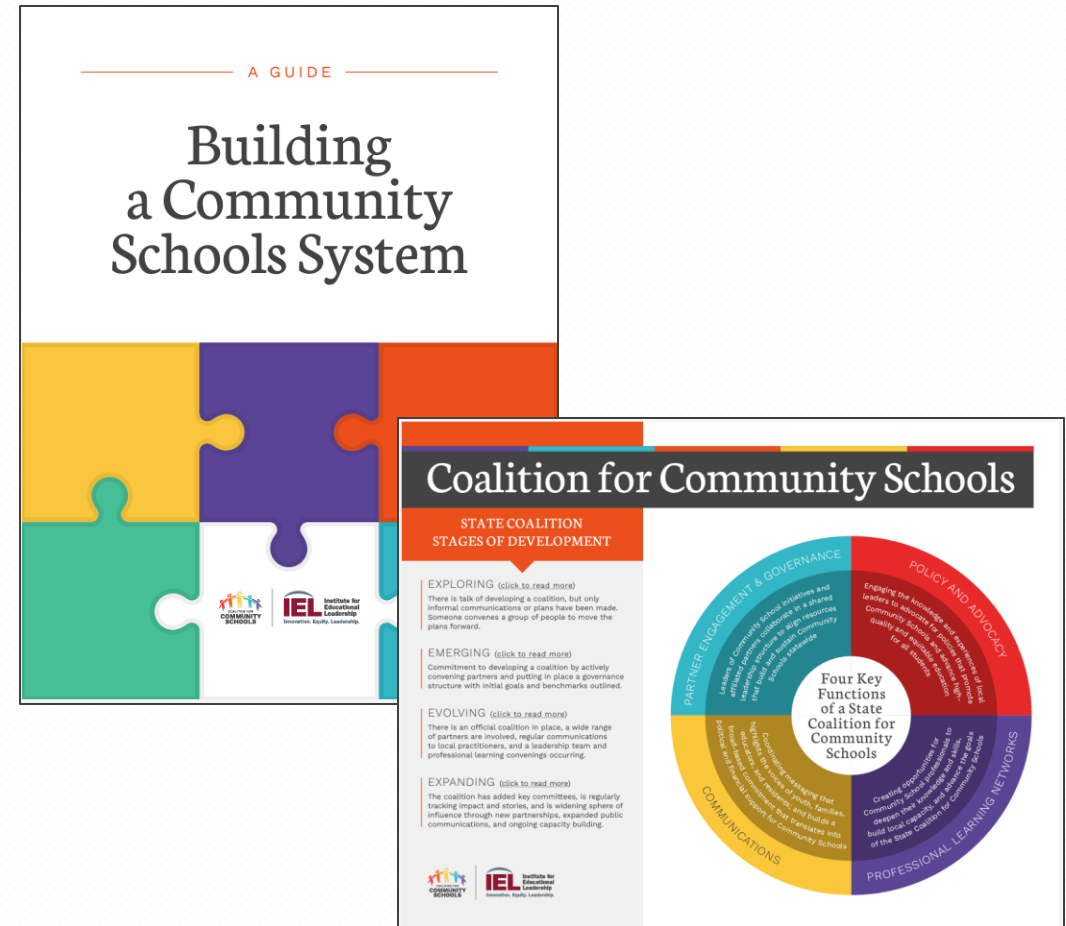
- **Amon Couch**, Ed. D,
Executive Director, Partners for
Rural Impact - Appalachia
- **Leigh Ann Martínez**, Community
Schools Director, United Way of
Racine County, she/ella/her
- **Lori Grassgreen**, Director,
Conditions for Learning,
Association of Alaska School
Boards

Questions?



Additional Resources & Next Steps

- Department of Education's FSCS Webpage and Email: FSCS@ed.gov
- Coalition for Community Schools FSCS Webpage: www.CommunitySchools.org
- Next Sessions:
 - June 29: "Hurdle" Discussion
 - July 11: Evaluation Webinar



Thank you! Feedback/Contact

Joline Collins, Northeast Region Deputy Director

collinsj@iel.org

Dr. Donnie Hale, Southern Region Deputy Director

haled@iel.org

Dr. Ryan Hurley, Midwest Region Deputy Director

hurleyr@iel.org

Christa Rowland, Western Region Deputy Director

rowlandc@iel.org

Ready, Set, Apply! FSCS FY23 Webinar Feedback

