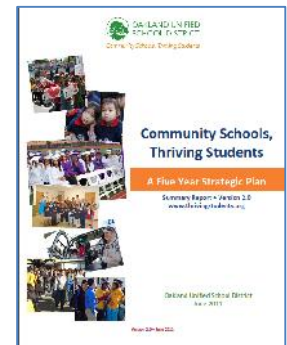


## Healthy Kids, Healthy Oakland: Expanding Community Schools Data Framework through Opportunity Mapping

Jean Wing, Juan Du, Susan Lindell Radke  
Research, Assessment and Data  
Oakland Unified School District

### OUSD Five Year Strategic Plan

- **VISION:** All students will graduate from high school. As a result, they are caring, competent, and critical thinkers, fully informed, engaged and contributing citizens and prepared to succeed in college and career.
- **APPROACH:** To supplement traditional enrichment methods of enhanced curriculum and improved teaching practices, by aligning with other agencies to raise the entire student experience through housing, nutrition, health and welfare partnerships. These partnerships result in a **Full Service Community District**.
- **MISSION:** Oakland Unified School District is becoming a Full Service Community District that serves the whole child, eliminates inequity, and provides each child with excellent teachers every day.



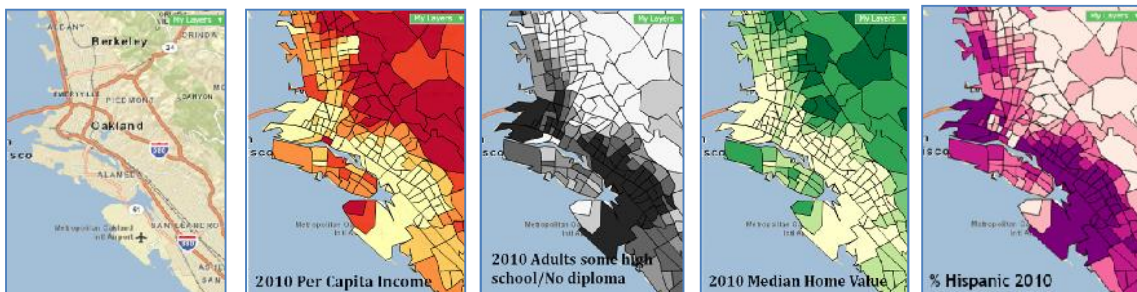
- **Healthy Kids, Healthy Oakland: DATA FRAMEWORK**

- Provide comprehensive information and analysis about the **whole child**, to include **traditional AND non-traditional indicators**.
- New tools for presenting data in **actionable ways**, in order to **address inequities** and **improve educational outcomes** for all Oakland students.
- Help to move every child **closer to opportunity** and **further from constraints**, to create conditions for learning and thriving.

- Alameda Co. Public Health Dept. **PLACE MATTERS** initiative

*“An African American child living in Oakland’s flatlands will die, on average, 15 years before a Caucasian child living in the City’s most affluent area – the Oakland hills.”*

- Oakland Geography: **THE GEOGRAPHIC DIVIDE...**



➤ **HKHO Opportunity Mapping - HKHO LITE v2 (ArcGIS Online)**



One map...many devices.



- **Program Objectives**
  - Democratize data to raise community awareness of inequities.
  - Inform agencies of inequities to promote data sharing.
  - Inform decisions about school services...begins the conversation.
- **Year 0: Foundational 10 Planning – start with data we have & know**
  - Graduation Rates
  - Healthy Food Programs
  - School Poverty/ Free & Reduced Price Lunch Status
  - Academic Performance
  - Chronic Absenteeism
  - OUSD Early Childhood Education/Head Start Centers
  - Student Ethnicity
  - Life Expectancy/Student Physical Fitness
  - Public Community Resources (Libraries, Rec Centers)
  - Housing Vacancy
- **Year 1: Extended Indicator Planning (under development)**
  - Social & Emotional Student Health (California Healthy Kids Survey)
  - School Discipline (student/school)
  - Transitional Families
  - Housing Status: Public Housing
  - Career Pathways
  - Healthy Neighborhood Indicators (student ground-truthed fresh food locations)
  - Neighborhood Crime
  - Housing Foreclosure Rates
  - Student Physical Health: asthma rates/school & neighborhood
  - Public Health: Low birth weight
- **Mapping these indicators helps district leaders and school communities to see where the gaps are.**
- **It is a new way of using place-based data to drive strategies and decisions such as allocation of resources to places and students where the need is greatest.**
- **It also helps community partners align their resources with the school district, which is especially important in a time of diminishing resources across-the-board.**

<http://www.thrivingstudents.org/42>

Oakland Unified School District  
Research, Assessment & Data  
1011 Union Street  
Cafeteria Annex Building  
Oakland, CA 94607  
(510) 451-4164

Jean Wing, Executive Director ([jean.wing@ousd.k12.ca.us](mailto:jean.wing@ousd.k12.ca.us))

Juan Du, Statistician ([juan.du@ousd.k12.ca.us](mailto:juan.du@ousd.k12.ca.us))

Susan Lindell Radke, GIS Analyst/Demographer ([susan.radke@ousd.k12.ca.us](mailto:susan.radke@ousd.k12.ca.us))