



EXPANDING LEARNING TIME AND OPPORTUNITIES: *THE COMMUNITY SCHOOLS WAY*

Tuesday January 24, 2012

- **Reuben Jacobson**, Institute for Educational Leadership
- **Jan Creveling**, Tulsa Area Community Schools Initiative
- **Rebecca Kelley**, YMCA of Greater Cincinnati, Cincinnati Community Learning Centers
- **Adeline Ray**, Chicago Public Schools Community School Initiative

WHAT IS A COMMUNITY SCHOOL?



- ▶ *A place and a set of partnerships connecting school, family, and community*
- ▶ Distinguished by an integrated focus on academics, youth development, family engagement, health and social services, and community development
- ▶ Curriculum emphasizes real-world learning
- ▶ Expanded learning opportunities
- ▶ Uniquely equipped to develop its students into educated citizens ready and able to give back to their communities.

SELECTED RESULTS

- ▶ **Increased Achievement:** High-implementing Tulsa community schools outperform non-community schools in math by 32 points and reading by 19 points
- ▶ **Increased Graduation:** Oyster Community Learning Center in Cincinnati has graduated more students in past 3 years than previous 85
- ▶ **Ready for school:** Students participating in Judy Centers (MD community schools) had higher readiness scores than comparison
- ▶ **Quality Instruction:** Increase in student enrollment in Honors and/or AP courses - 20% to 33.3% at Glencliff High School (Nashville, TN)
- ▶ **For more results visit:** <http://www.communityschools.org/results/>

WHAT HAPPENS AT A COMMUNITY SCHOOL?

- ▶ Engaging Academic Instruction
- ▶ **Expanded learning time and opportunities**
- ▶ Comprehensive services: health, mental health, prevention services and family support
- ▶ Community-based learning (service, civic, experiential)
- ▶ Adult education and workforce classes
- ▶ Community building
- ▶ Early child development
- ▶ Family and community engagement
- ▶ Youth Development

SIMILARITIES BETWEEN COMMUNITY SCHOOLS & ELT

- ▶ **Expanded learning time**
 - ▶ Schools become centers of the community and are open to everyone 24/7
- ▶ **Central to the school's reform strategy**
 - ▶ Both change the way traditional schools do business
- ▶ **Local decision-making**
 - ▶ Decisions about strategies made locally

DIFFERENCES BETWEEN COMMUNITY SCHOOLS & ELT

- ▶ **More than learning**
 - ▶ Additional supports for students and families
- ▶ **Expanded opportunities, not just time**
 - ▶ Enriching partnerships during and beyond school day
- ▶ **More than students**
 - ▶ Learning for families and community members
- ▶ **Centrality of partners**
 - ▶ Partners share resources, expertise, and staff

INTEGRATING ELT INTO COMMUNITY SCHOOLS STRATEGY



- ▶ Tulsa Area Community Schools Initiative
- ▶ Cincinnati Community Learning Centers
- ▶ Chicago Public Schools Community School Initiative



ONE WORLD, MANY STORIES

**TACSI July Summer Program
2011**

TULSA AREA COMMUNITY SCHOOL INITIATIVE

- ▶ FREE ~ FUN ~ SAFE ~ HEALTHY... summer experiences to **address summer learning loss.**
- ▶ **Overview:** 40 organizations and individuals provided 12 days (84 extra hours) of programming for over 300 kindergarten through 5th graders in 5 high poverty community schools
- ▶ **Partners stepped up** to take part in the pilot to provide focused supports to create opportunities during July when nothing else is being provided for the population we serve.

BUDGET

Item	Amount
In Kind (Camp Week)	\$51,110
Misc. (swimsuits, food, backpacks, water bottles, etc.)	\$11,700
Adult Facilitators (7) \$15/hr. x 7 hr pr day \$105 pr. Day	\$8,820
Teen Volunteers (30) \$50 gift cards per wk. x 3 wks	\$4,500
Transportation	\$5,000
TACSI (program supplies and fees)	\$4,400
TOTAL	\$85,530

ELT PROGRAMMING

- ▶ **TACSI** has been working with community partners to provide time, staff, and resources to promote a blend of academic and social/emotional strategies while placing caring adults as mentors in the schools.
 - ▶ **July 11 – 14 Literacy and Arts**
 - ▶ **July 18 – 21 Camps (off site)**
 - ▶ **July 25 – 28 Fitness/Recreation & Nutrition**



SUSTAINABILITY

- ▶ Impact on literacy- Northeastern State University's Reading Clinic
- ▶ Increased awareness about physical activity and nutrition- swimming opportunities provided
- ▶ Exposure to the arts- drama, music, visual arts, etc.
- ▶ District child nutrition program provides breakfast, lunch and snacks
- ▶ Facilities were kept open and space provided to accommodate the summer program
- ▶ Conversations are underway to plan for 2012

CINCINNATI COMMUNITY LEARNING CENTERS' 5TH QUARTER INITIATIVE

REBECCA KELLEY, JD
GROUP VICE PRESIDENT
YMCA OF GREATER
CINCINNATI



FOR YOUTH DEVELOPMENT
FOR HEALTHY LIVING
FOR SOCIAL RESPONSIBILITY

CINCINNATI CLC INITIATIVE

- Overview
- YMCA's roles:
 - ▶ CLC Initiative
 - ▶ 5th Quarter





I like 5th quarter
because it help me with
my skills and grades.



FIFTH QUARTER OVERVIEW

- Runs 5 weeks beginning in June, immediately after regular school year
- Conducted past 3 summers, reaching over 2,000 students annually
- Targets students at 16 lowest performing elementary schools
 - ▶ **Full-day program**
 - ▶ **Morning focuses on academics**
 - ▶ **Afternoon focuses on enrichment**
- Additional support from Wallace Foundation
 - ▶ **Summer Learning Coordinator**
 - ▶ **Longitudinal Outcomes Study**



ACADEMICS & ENRICHMENT

- Acceleration emphasized
- Students exposed to curriculum at next grade level
- Provided by district teachers
- Enrichment complements academic instruction
- Planned, delivered by Community Learning Center (CLC) Partners
 - ▶ **Examples**
 - ▶ **Funding Mix**



ADDRESSING CHILDHOOD HUNGER

- ▶ “A new food I tried was starfruit. I liked it! It tasted a little like watermelon.” – La’Keese, 3rd Grade



- ▶ “I tried carrots, squash, and peaches. We learned about being healthy by exercising and eating the right foods.” – Takyla, 3rd Grade



Leveraged CLC Cross-Boundary Team’s Nutrition Services connections via Growing Well Cincinnati partnerships for summer food program participation

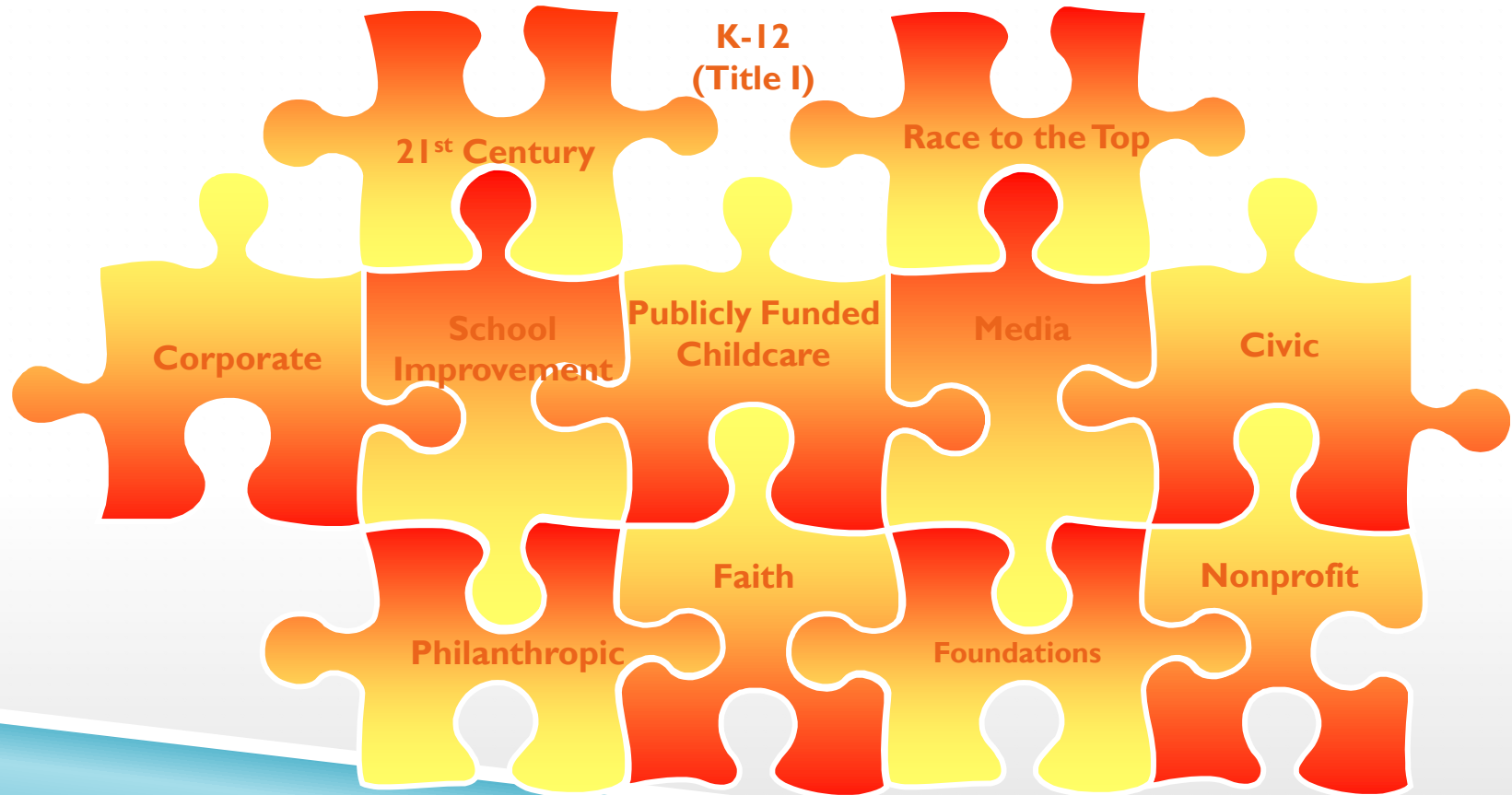
PARTNERING FOR RESULTS

- Significant gains at lowest performing schools
- Lifted overall district results
- CPS highest rated major urban district in Ohio



The Thing I like about 5th quarter
IS Because It helps us to get ready
for the next grade.

SUSTAINABILITY & FINANCING OF 5TH QUARTER



PUTTING FUN BACK IN LEARNING

- Quality expanded learning provides more enrichment than “regular” school hours permit



COMMUNITY LEARNING CENTER PARTNERSHIPS

- ▶ CPS has 33 partnerships funded by 21st Century CLC grants
 - ▶ **Foundation of our commitment to Community Learning Centers & Summer learning**
 - ▶ **After school during year**





CHICAGO PUBLIC SCHOOLS

Community Schools Initiative

The Chicago Public Schools (CPS) administers the largest community schools initiative in the nation. Awarded the *Community Schools National Award for Excellence* in 2006, the CPS Community Schools Initiative (CSI) has grown to include over 100 elementary and high schools. To date, these schools have formed nearly 700 partnerships with non-profit organizations across the city in support of student *and* family success.

CSI CAPITALIZE ON ELT OPTIONS

- ▶ 65% of CSI schools have opted for “Track E”
 - ▶ Shorter summer break: 6 weeks vs. 10 weeks
 - ▶ Stem summer learning loss
 - ▶ Fall and Spring: Two week Intersession
 - ▶ Intervention and acceleration
 - ▶ Collaborative planning time for next quarter for all ELT-- in and outside the academic day
 - ▶ Better serve working families



"It's difficult for Chicago teachers to impart the knowledge and skills their students require when our children spend less time in the classroom than just about anywhere else in the nation."

– Mayor Rahm Emanuel,
Campaign Address, Dec. 10,
2010

CSI CLOSING THE TIME/ACHIEVEMENT GAP



- ▶ Last year more than 36,000 students participated in over 4,100 activities, (nearly 363,000 hours of programming).
- ▶ CSI partners provided over 180,000 hours of programming independent of CSI funding.
- ▶ Participants in 100% of CPS community schools show:
 - ▶ Higher attendance rates
 - ▶ Higher reading and math scores
 - ▶ More positive perceptions of school safety, teacher support, and academic rigor
 - ▶ Fewer suspensions

CPS FULL SCHOOL DAY

*“Increased learning time will include academic, arts and athletics programs beyond the traditional school day – **building on the success of the community school model** in place in some Chicago schools – and **forging new, creative partnerships** with community and civic organizations that extend the school day, week and year.”*
-Mayor Rahm Emanuel, Campaign Address, December 14, 2010

CPS longer school day priorities:

- ▶ Spending more time on core academic subjects.
- ▶ Broadening enrichment opportunities.
- ▶ Longer mid-day lunch and recess period.
- ▶ Additional time for teachers to collaborate in groups.



CSI FULL SCHOOL DAY PIONEERS

W. Brown:

- ▶ 45 additional minutes for math
- ▶ 45 additional minutes for language arts
- ▶ 45 additional minutes for enrichment
 - ▶ Art

Howe:

- ▶ 20 additional minutes for math
- ▶ 20 additional minutes for reading
- ▶ 20 additional minutes for science
- ▶ 15 additional minutes for physical education
- ▶ 15 additional minutes for enrichment
 - ▶ Art

Morton:

- ▶ 45 additional minutes for language arts
- ▶ 30 additional math for minutes
- ▶ 15 additional minutes for enrichment
 - ▶ Physical education and art



Bethune:

- ▶ 60 additional minutes for language arts
- ▶ 5 additional minutes for math
- ▶ 5 additional minutes for science
- ▶ 20 additional minutes for enrichment
 - ▶ Music, art, PE and technology

Mays:

- ▶ 35 additional minutes of Reading per day
- ▶ 18 additional minutes of Mathematics per day
- ▶ 16 additional minutes of Science per day
- ▶ 21 additional minutes of Enrichment/Ancillary lessons per day

IL 21ST CCLC – WAIVER OPTION

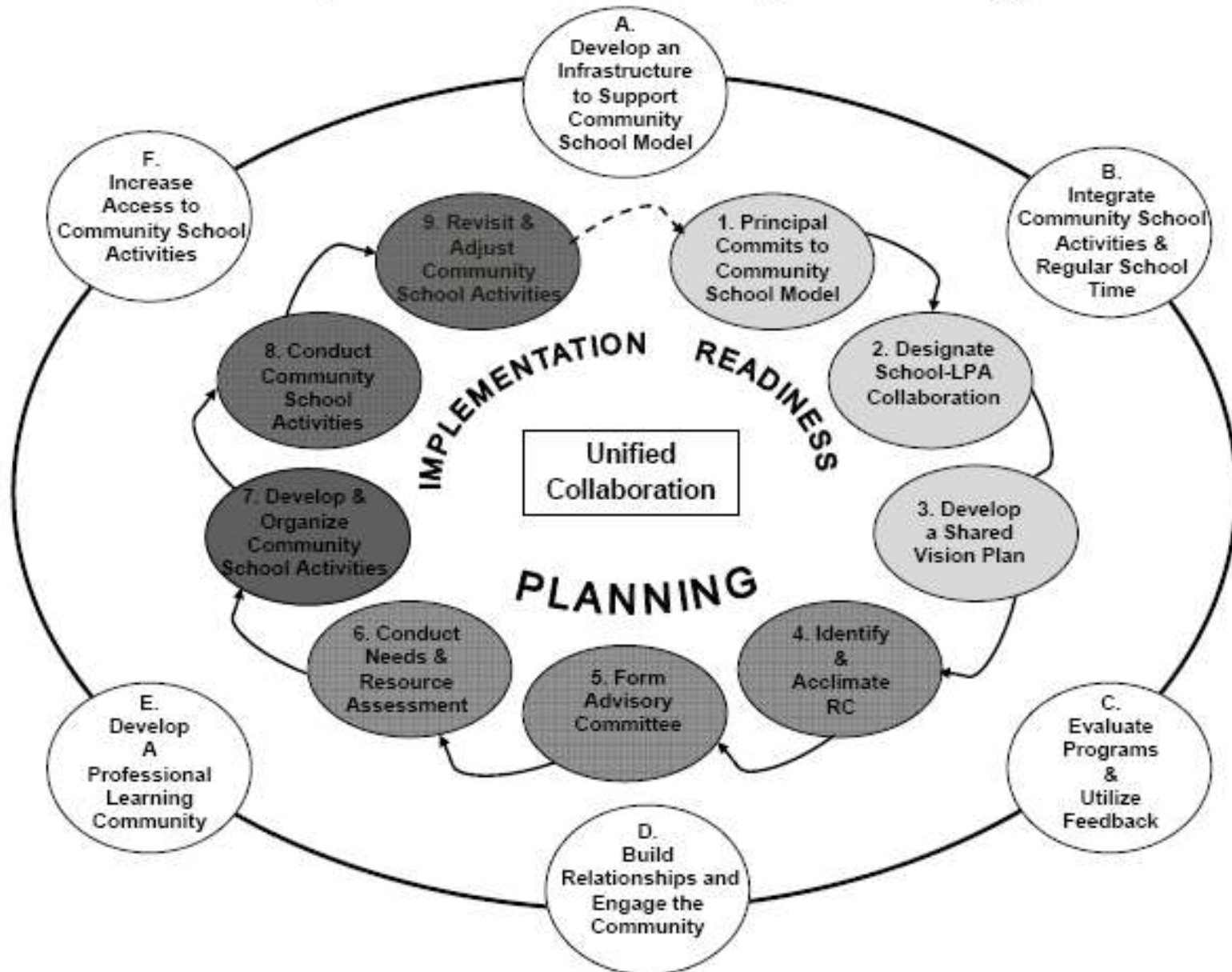
CSIs Model Best Practices:

- ▶ Partnership....(not Vendorship).
- ▶ CSI Needs Assessment.
- ▶ Comprehensive services aligned to the school improvement plan.
- ▶ Intentionally address Family and Community Involvement.

Six 21st CCLC Grants fund the CSI

“The Improving Student Achievement and Engagement through Expanded Learning Act, S.1311. . . . would allow districts like CPS to use their federal 21st Century Learning Center funding for extended learning time rather than solely for after-school activities.”
-cps.edu/News/Press_Releases

CSI Implementation and Sustainability Process Strategy



Note: Model adapted from "SEL Implementation and Sustainability Process" (CASEL, 2006)

RESOURCES

- ▶ Center for American Progress Report - *Breaking the Mold: Combining Community Schools with Expanded Learning Time to Help Educationally Disadvantaged Students*
- ▶ Scaling Up School and Community Partnerships: The Community Schools Strategy (www.communityschools.org/scalingup)
- ▶ Financing Community Schools: Leveraging Resources to Support Student Success
- ▶ Promoting Student Success: A Rationale and Results Framework
- ▶ Growing Community Schools: The Role of Cross-Boundary Leadership

CONTACT INFORMATION



- ▶ Reuben Jacobson, jacobsonr@iel.org
- ▶ Jan Creveling, jancreveling@aol.com
- ▶ Rebecca Kelley, RKelley@CincinnatiYMCA.org
- ▶ Adeline Ray, aoray@cps.k12.il.us